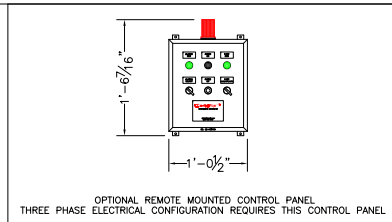


BILL OF MATERIALS	
MARK	DESCRIPTION
N1	BLACKWATER INLET - 4" 150# FNPT
N2	AERATION CHAMBER VENT - 3" 150# FNPT
N3	CHLORINATION CHAMBER VENT - 1 1/2" 150# FNPT
N4	TREATED LIQUIDS PUMP DISCHARGE - 2" 150# FNPT
N5	CROSSOVER MANIFOLD CLEANOUT - 2" 150# FNPT
N6	AERATION CHAMBER DRAIN - 2" 150# FNPT
N7	CLARIFICATION CHAMBER DRAIN - 2" 150# FNPT
N8	MEDIA CHAMBER DRAIN - 2" 150# FNPT
N9	CHLORINATION CHAMBER DRAIN - 2" 150# FNPT
N10	SUBMERSIBLE DISCHARGE PUMP CABLE CONNECTION - 1/2" 150# FNPT
N11	FLOAT LEVEL CABLE CONNECTION (2 EA) - 1/2" 150# FNPT
N12	CHLORINE INJECTION CONNECTION - 1/2" 150# FNPT
N13	TREATED LIQUIDS SAMPLE VALVE - 3/8" 150# FNPT W/BRNZ VALVE
N14	CLARIFIER FILL/VENT - 1" FNPT W/ BRONZE BALL VALVE
N15	MEDIA CHAMBER VENT - 1 1/2" 150# FNPT
N16	AERATION CHAMBER/MEDIA CHAMBER CROSSOVER - 2" 150# FNPT
N17	MEDIA CHAMBER AIR AGITATION CLEANOUT - 1" 150# FNPT W/BRNZ VALVE
N18	CROSSOVER MANIFOLD ANTI-SYPHON CLEANOUT ACCESS PORT - 3" 150# FNPT
N19	CLARIFIED LIQUIDS SAMPLE VALVE - 1/2" 150# FNPT W/BRNZ VALVE

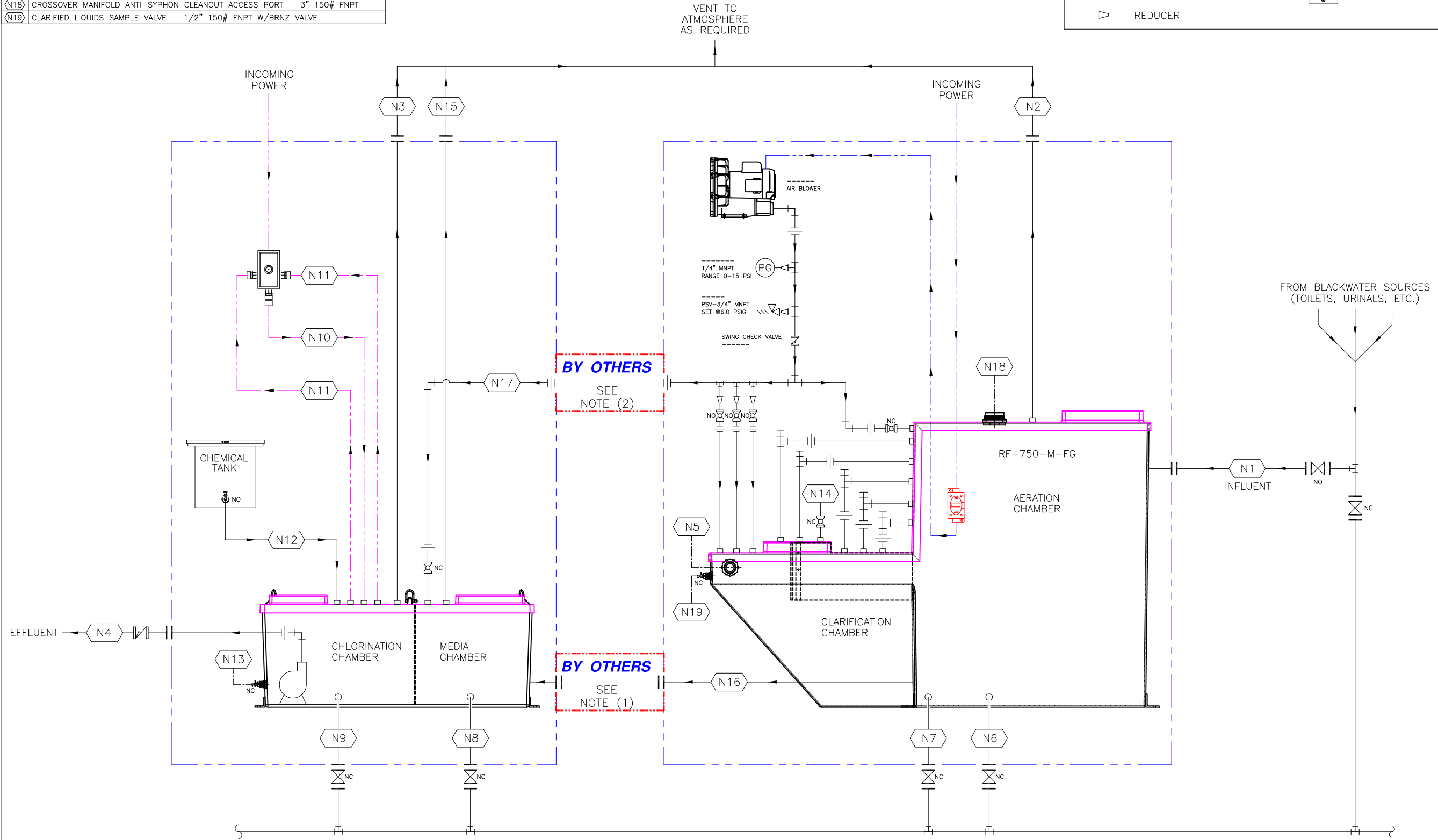
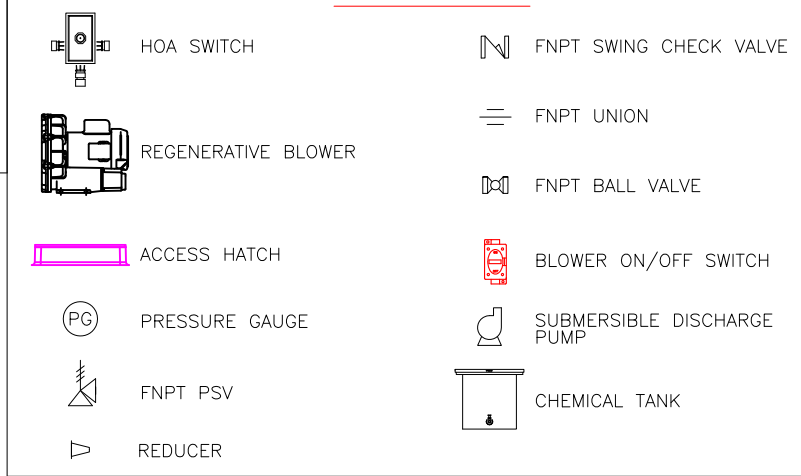
NOTES:

1) "N16" INTERCONNECTING 2" SCH. 80 PVC PIPE & FITTINGS SUPPLIED BY OTHERS. OTHERS RESPONSIBLE FOR INTERCONNECTION FABRICATION AS NECESSARY ON SITE.

2) "N17" INTERCONNECTING 1" SCH. 40 316 SS PIPE & FITTINGS SUPPLIED BY OTHERS. OTHERS RESPONSIBLE FOR INTERCONNECTION FABRICATION AS NECESSARY ON SITE.



**LEGEND**



This drawing is the exclusive property of: RED FOX ENVIRONMENTAL SERVICES, INC. It is furnished on a confidential basis. No portion of this drawing may be copied, traced, photographed or in any other way reproduced; nor may any item hereon depicted be manufactured or shown without the written consent of:

MODEL: RF-750-M-FG  
 MARINE SANITATION DEVICE TYPE II  
 U.S.C.G. CERTIFICATION NUMBER: 159.015/10137/0



ENVIRONMENTAL SERVICES, INC.	
PROJECT ENGINEER: JDE DRAWN BY: BMR DATE: NOV/04/2014 SCALE: NONE	REVISION DESCRIPTION 11/04/14 APPROVED FOR CONSTRUCTION DATE: 11/04/14 REV. NO. 001
TITLE: RED FOX RF-750-M-FG STANDARD WITH PUMP DISCHARGE PIPING & INSTRUMENTATION DIAGRAM	DATE: 11/04/14 REV. NO. 001

APRVD:	JDE
DWG. BY:	BMR